

EPSON[®]
EXCEED YOUR VISION

Epson
Business **Projectors**



Show people what you've got to say

Epson – world leader

Trust the world leader in the projector business to bring you a comprehensive range of business projectors. Whether in the classroom, the boardroom or out on the road, Epson gives you the power and features to make amazing presentations.

Our 3LCD technology delivers bright, clear images and video – quickly, reliably and in just about any environment. Every projector is packed with the latest features to ensure a great presentation every time.



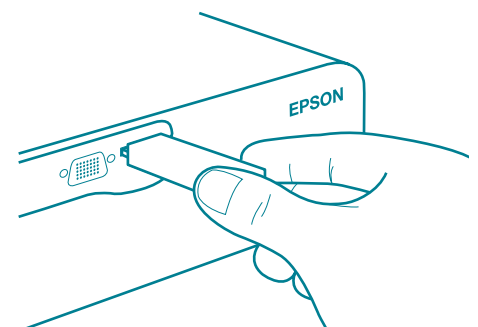
Cutting-edge technology

We invest extensively in developing new, innovative business solutions. A great example is the Epson EasyMP™ PC-less feature for standalone presenting. Also, our networking technologies enable simple, wired or wireless integration into your corporate LAN.

Epson's suite of Projector Software ensures you make the most of your networked projectors. Control and monitor over 1000 projectors on a network with Epson's EMP-Monitor software – check status and settings at distance, and prevent costly down-time with preventative error warnings.



EasyMP™ wireless technology
Connect up to four projectors wirelessly



EasyMP™ PC-less technology
PC-less projection with memory device

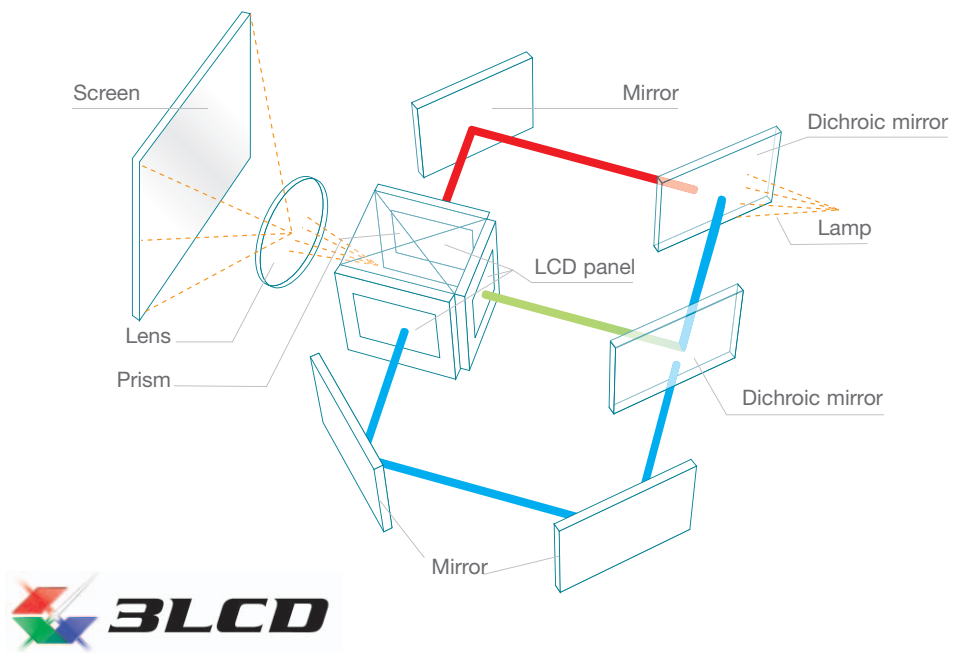


What is 3LCD technology?

3LCD is the core of every Epson projector and the world's preferred projection technology. It is simple, reliable but extremely advanced and enables superb quality, smooth colour image reproduction.

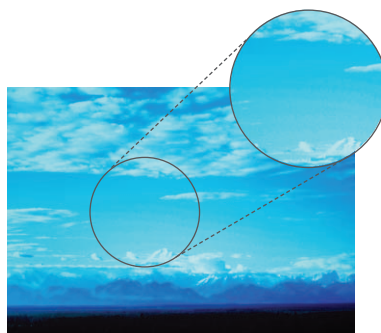
Bright colours

Most presentations aren't black and white. The new Colour Luminance measurement from the 3LCD alliance judges the brightness of projected colours – so you achieve the most vibrant colours on the market.

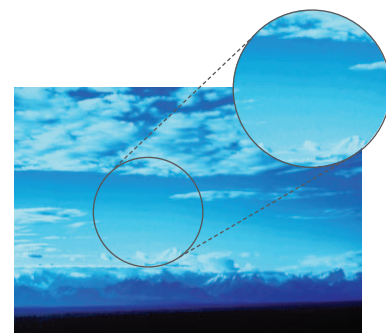


Natural images

Achieve natural, lifelike videos, photos and presentations with Epson 3LCD technology. The panels produce smoother colours, with fine shades, colour gradients and accurate image reproduction.



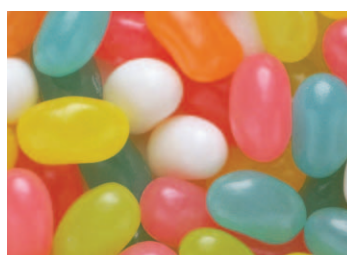
3LCD system



Single panel system*

Easy on the eyes

The straight through, mixed colour 3LCD panel system involves no moving parts or image flickering. The colours are blended together simply, to produce natural images that are easy-on-the-eye.



3LCD system



Single panel system*

*Image for illustrative purposes only



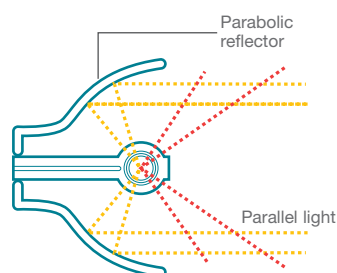
Epson multi-purpose projectors combine amazing power with genuine portability. They're great for lighting up a **classroom** or **meeting room**, and can be quickly and easily moved between locations. You can project big, perfect images at an angle, or from the back or front of the room. They are also fully compatible with the latest digital whiteboard systems.

Epson E-TORL lamps

The exclusive Epson E-TORL lamp is a huge step forward. It actually produces brighter images from a lower wattage bulb. Amazing benefits include lower power consumption, less heat, longer lamp life and quieter operation.

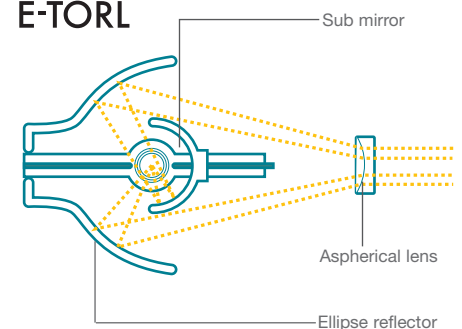
Normal type lamp

Lose 20% – 30% of total light



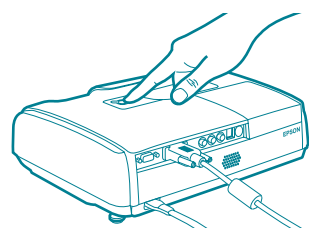
Twin optimised reflection lamp

E-TORL

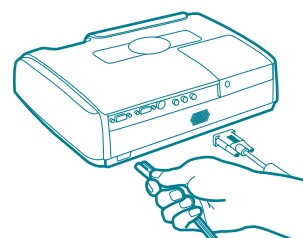


Epson super-fast shut down

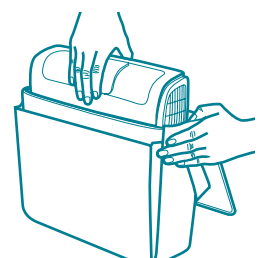
You can move on quickly after making your presentation, thanks to Epson's Instant Off technology. This means you can unplug your projector and be ready to go just a couple of seconds after turning it off.



1. Switch projector off



2. Unplug cables



3. Pack in carry case

Epson EMP S4

Simple to carry between rooms, but also highly capable as a ceiling mounted projector

The last word in affordable multi-purpose education and business presenting

- Project clear, bright images with SVGA resolution and 1800 Lumens brightness
- Stay mobile – just 2.6kg with a carry case for easy portability and storage
- Maximise quality with 7 colour modes including Game, Sports and Presentation
- No waiting after use – takes just 2 seconds to power down



Make short breaks in your presentations – and keep the lens safe on the move – with the sliding lens cover



Epson EMP X3

An excellent introduction to the amazing capabilities of Epson's XGA projection technology

- Communicate a clear message with sharp XGA resolution and 2000 lumens brightness
- Keep your projector safe and secure with password protection
- Present without distractions – super-quiet operation at just 30db
- Enjoy added flexibility with support for up to SXGA resolution



Epson EMP 62

Epson's leading SVGA model which combines quality, flexibility and affordability

- Combine brightness and detail with 2000 lumens and SVGA resolution
- Present in true multi-media style with a built-in 5W speaker
- Automatically achieve a perfectly square image, even from an angle, without touching a button!
- Switch easily between two presenters with dual computer inputs



Epson EMP 82

Our flagship multi-purpose projector, a feature-packed, networkable* presenting partner

- Combine XGA resolution and 2000 lumens brightness with amazing flexibility
- Choose how you present with connection to two PCs and an external monitor
- Navigate through presentations via remote control based USB mouse emulation
- Join a network simply and quickly with RS232 control*

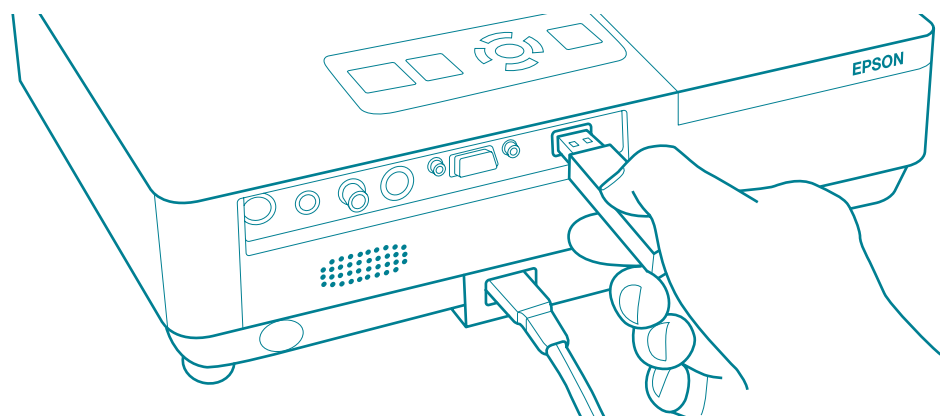
*with optional third party external converter



When you're travelling between customers, you need to move fast and work even faster. Epson's 3LCD technology makes this possible. It combines high performance with extremely compact dimensions to create a range of amazingly lightweight projectors. Now serious **travelling professionals** can make a very big impact but only need carry a very small bag.

Epson EasyMP™ means no PC

Now you can leave your computer behind when you travel, because Epson EasyMP™ makes your projector a standalone presenting tool. Simply plug in a USB key containing your presentation, video, or even holiday snaps, and run it via remote control.



EasyMP™ PC-less technology
PC-less projection with memory device

Epson EMP 1715

A big performer in a lightweight body – full wireless, networking and PC-less features

- Discover mobile quality with XGA resolution and incredible 2700 lumens – from just 1.7kg!
- Forget cables thanks to high speed wireless connectivity up to 54Mbps
- Keep audiences focused by pausing presentations with the sliding lens shutter
- Ensure security and confidentiality with market-leading wireless security

Don't carry a computer – show your presentations, family photos and even Mpeg videos directly from a USB key



EasyMP™



Make short breaks in your presentations – and keep the lens safe on the move – with the sliding lens cover



Epson EMP 1700

The ideal presenting partner for the discerning, budget conscious mobile presenter

- Quality on the move with XGA resolution and 2200 lumens at just 1.6kg
- Achieve a uniform image with totally automatic vertical keystone correction
- Save time and energy with Quick Start and Instant Off functions
- Project a stunning 60+ inch screen at just 2 meters distance



Epson EMP 1710

The ultimate in image brightness, built to make a big impression anywhere you present

- Grab audiences with an amazing 2700 lumens and XGA resolution at just 1.6kg
- Get started quickly with 7 seconds from power-on to projection
- Present from just about any position with 30° vertical keystone correction
- Navigate through presentations via remote control based USB mouse emulation

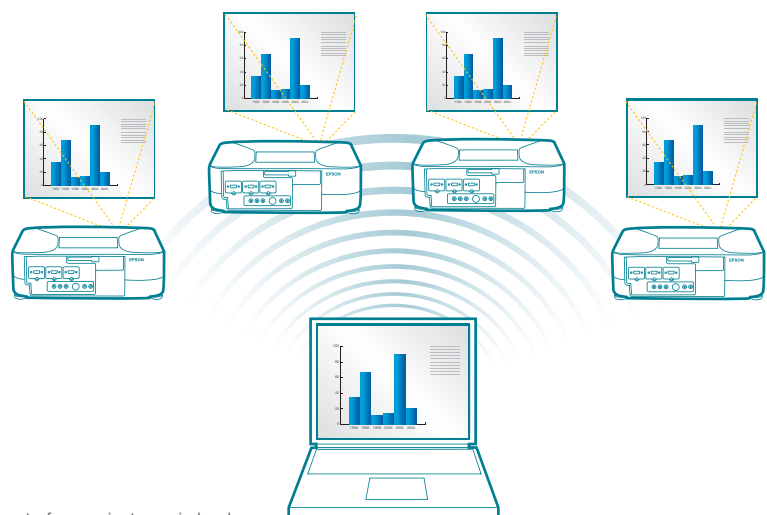




With an Epson desktop projector, you combine the brightness and resolution needed in bigger venues, with the bonus of quick, easy portability between locations. This is a much more flexible solution than a static, ceiling mounted projector. Now **hotels, sports venues** and **conference centres** can enjoy increased flexibility and economy without compromising performance.

Epson EasyMP™ – no more wires

Epson is embracing the wireless revolution with our EasyMP™ technology. You can connect four Epson projectors to a laptop with our NS Connection software or many more on a wireless LAN with the Epson EMP Monitor Suite.



Connect up to four projectors wirelessly

Epson EMP 835

An outstanding desktop projector – true wireless, PC-less, networkable presenting support

- Project in superb, clear colour with XGA resolution and 3000 lumens brightness
- Leave your PC behind and work direct from a PCMCIA card or USB flash memory
- Present wirelessly with Epson EasyMP™ technology
- Make it look easy from the start with one-touch auto-setup and electric zoom and focus

The Epson EMP-835 includes an 802.11 b/g wireless card for full connectivity to a wireless network or your PC



EasyMP™



Enhanced connectivity adds flexibility to presentations – use several sources simultaneously



Epson EMP 821

Tough, portable and built to last in the world of professional desktop presenting

- Make presentations special with XGA resolution, 2600 lumens and quiet operation
- Move easily between rooms with 4kg weight and built-in carry handle
- Enhance presentations by connecting up to 2 PCs with audio, and external monitor
- Connect to a network for even more flexible presenting with RS232 control*

*with optional third party external converter



Epson EMP 830

An excellent desktop projector offering a superb combination of features

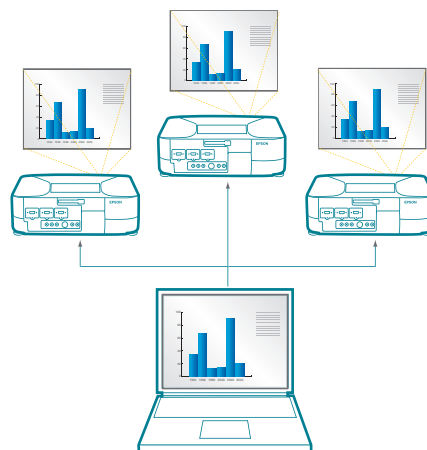
- Impress any room with XGA resolution and 3000 lumens whilst still portable at 4.7kg
- Make presenting easy with auto set-up, and one-touch focus and colour adjust
- Get connected to your LAN with built-in RJ45 connectivity



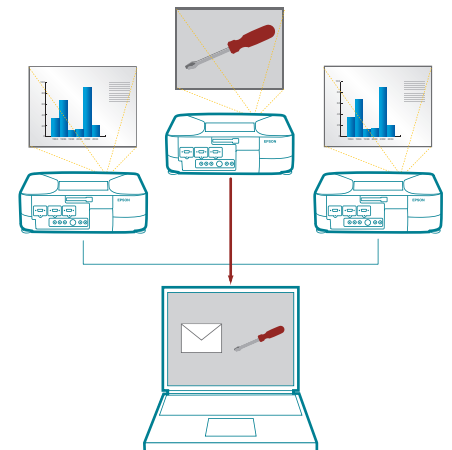
Some venues require the biggest, brightest performances. With their advanced technologies and vast array of functions, Epson installation projectors deliver clear, bold images to audiences in high capacity **auditoriums, theatres** and **lecture halls**. This is big screen entertainment at its brightest and most colourful, with flexibility and reliability to match.

Epson EasyMP™ – networked

Direct connection and access to a network is simple and effective with Epson EasyMP™. The Epson EMP-Monitor Suite provides comprehensive remote management, and a networked projector can even send you an email in the unlikely event of something going wrong.



Present your presentation over the network from any networked PC – no need for an additional VGA cable!



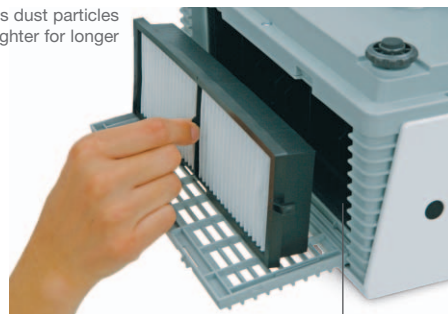
View and control all network projector settings from one PC. Receive automatic email alerts and reports in the event of technical problems

Epson EMP 6100

Durable, high performance installation projector designed for tough networked environments

- Project brilliant images in amazing colour at 3500 lumens brightness
- Avoid dust or smoke damage with a fully sealed casing and high efficiency smoke filters
- Keep costs low with simple maintenance and exceptional reliability
- Stay secure with cable bar, lockable cable cover and even alert via your LAN

The super high-efficiency filter keeps dust particles at bay, so your projector stays brighter for longer



The fixed glass lens cover protects the lens from damage and prevents dust or smoke degradation



Projector installed using ceiling mount



Epson EMP 7900

A compact installation projector with super-brightness to impress in any environment

- Project at a dazzling 4000 lumens from a projector weighing just 5.6kg
- Choose from a variety of compatible Epson lenses for presenting flexibility
- Set up easily and adjust focus and colour at the touch of a button
- Let your projector detect the projection angle and adjust the image for you



EasyMP™

Epson EMP 7950

A truly professional projector which includes the full EasyMP™ package

- Project in clear, sharp Epson colour at up to 4000 lumens brightness
- Get working fast with a power-off to full brightness time of just 15 seconds
- Forget cables with EasyMP™ technology for wireless networking 802.11g
- Ensure uniform images with 40° vertical and 20° horizontal keystone correction



EasyMP™

Epson EMP 8300

The top-of-the-range networkable installation projector that brings superior brightness to larger venues

- Give your audience a show to remember with 5200 lumens brightness
- Ensure a square image from any angle with Epson Quick Corner technology
- Integrate seamlessly into any infrastructure with EasyMP™ networking
- Trust in incredible build quality to bring years of outstanding performance

Multi-purpose

Ultra-portable



		Epson EMP-S4	Epson EMP-X3	Epson EMP-62	Epson EMP-82	Epson EMP-1700	Epson EMP-1710	Epson EMP-1715
Resolution		SVGA (800x600)	XGA (1024x768)	SVGA (800x600)	XGA (1024x768)	XGA (1024x768)	XGA (1024x768)	XGA (1024x768)
Brightness	Normal Mode	1800 lm	2000 lm	2000 lm	2000 lm	2200 lm	2700 lm	2700 lm
	Economy Mode	1500 lm	1500 lm	1500 lm	1500 lm	1700 lm	2100 lm	2100 lm
Weight		2.6 kg	2.6 kg	2.7 kg	2.7 kg	1.6 kg	1.6 kg	1.7 kg
Dimensions		247x327x87	246x327x86	246x327x86	246x327x86	193x273x68	193x273x68	193x273x68
Noise (Economy Mode)		30dB	30dB	30 dB	30 dB	35 dB	35 dB	35 dB
Contrast Ratio		500:1	400:1	400:1	400:1	400:1	400:1	400:1
Lamp Type		170 W UHE (E-Torl)	170W UHE (E-Torl)	170W UHE (E-Torl)	170W UHE (E-Torl)	170W UHE (E-Torl)	170W UHE (E-Torl)	170W UHE (E-Torl)
Lamp Hours	Normal Mode	2000	2000	2000	2000	2000	2000	2000
	Economy Mode	3000	3000	3000	3000	3000	3000	3000
Lens	F Number	1.4	1.6-1.74	1.6-1.74	1.6-1.74	1.6 - 1.77	1.6 - 1.77	1.6 - 1.77
	Focal Length	16.6 mm	18.4-22.12 mm	18.4-22.12 mm	18.4-22.12 mm	23.77-28.54 mm	23.77-28.54 mm	23.77-28.54 mm
	Zoom	digital 1.0-1.35	1:1.2	optical 1:1.2	1:1.2	1:1.2	1:1.2	1:1.2
	Keystone Correction	Vertical Horizontal	-30 to +30 degrees no	-30 to +30 degrees automatic no	-30 to +30 degrees automatic no	-30 to +30 degrees automatic no	-30 to +30 degrees automatic no	-30 to +30 degrees automatic no
Input	Video	1x S-Video, 1x RCA	1x RCA, 1x S-Video	1x RCA, 1x S-Video	1x RCA, 1x S-Video	1x RCA, 1x S-Video	1x RCA, 1x S-Video	1x RCA, 1x S-Video
	Computer	1x RGB	1x RGB	2x RGB	2x RGB	1x RGB	1x RGB	1x RGB
	Audio	2x RCA	2x RCA	2x mini-jack, 2x RCA	2x mini-jack, 2x RCA	1x mini-jack	1x mini-jack	1x mini-jack
	Output	1x RGB 1W mono	1x RGB 1W mono	1x RGB 1x mini-jack, 5W mono	1x RGB 1x mini-jack, 5W mono	no 1W mono	no 1W mono	no 1W mono
Control		USB B	USB B	RS-232C and USB	RS-232C and USB	USB B	USB B	USB B and wireless
Network Interface		no	no	optional	optional	no	yes (optional module)	yes (optional module)
Wireless		no	no	no	no	no	no	yes (802.11a/b/g)
Mouse Emulation	USB	yes	yes	yes	yes	yes	yes	yes
PC less presentations		no	no	no	no	no	no	yes (USB memory)
Screen Size		30" to 300"	30" to 300"	30" to 300"	30" to 300"	30" to 300"	30" to 300"	30" to 300"
Accessories Included	Remote Control	yes	yes	yes	yes	yes	yes	yes
	RGB Cable	yes	yes	yes	yes	yes	yes	yes
	USB Cable	no	yes	yes	yes	no	no	yes
	Carry Case	yes	yes	yes	yes	yes	yes	yes

Desktop

Installation



		Epson EMP-821	Epson EMP-830	Epson EMP-835	Epson EMP-6100	Epson EMP-7900	Epson EMP-7950	Epson EMP-8300
Resolution		XGA (1024x768)	XGA (1024x768)	XGA (1024x768)	XGA (1024x768)	XGA (1024x768)	XGA (1024x768)	XGA (1024x768)
Brightness	Normal Mode	2600 lm	3000 lm	3000 lm	3500 lm	4000 lm	4000 lm	5200 lm
	Economy Mode	1900 lm	2200 lm	2200 lm	2700 lm	3000 lm	3000 lm	3000 lm
Weight		4 kg	4.7 kg	4.7 kg	7 kg	5.6 kg	5.2 kg	11.2 kg
Dimensions		272x350x109	365x280x114	365x280x114	340x465x160	325x419x117	325x419x117	491x349x179
Noise (Economy Mode)		30 dB	28 dB	28 dB	33 dB	33 dB	33 dB	33 dB
Contrast Ratio		500:1	600:1	600:1	500:1	700:1	700:1	1500:1
Lamp Type		200W UHE	200W UHE	200W UHE	230W UHE (E-Torl)	250W UHE (E-Torl)	250W UHE (E-Torl)	320W UHE
Lamp Hours	Normal Mode	2000	2000	2000	2500	2000	2000	2000
	Economy Mode	3000	3000	3000	3000	3000	3000	3000
Lens	F Number	1.75-2.42	1.75-2.42	1.75-2.42	1.75-2.42	lens options available	lens options available	lens options available
	Focal Length	24-38.2 mm	24-38.2 mm	24-38.2 mm	24-38.2 mm	lens options available	lens options available	lens options available
	Zoom	1:1.6	1:1.6	1:1.6	1:1.6	lens options available	lens options available	lens options available
	Keystone Correction	Vertical Horizontal	-30 to +30 degrees automatic -25 to +25 degrees automatic	-45 to +45 degrees automatic -25 to +25 degrees automatic	-30 to +30 degrees -25 to +25 degrees	-45 to +45 degrees automatic -20 to +20 degrees	-45 to +45 degrees automatic -20 to +20 degrees	-45 to +45 degrees automatic -40 to +40 degrees
Input	Video	1x RCA, 1x S-Video	1x RCA, 1x S-Video	1x RCA, 1x S-Video	1x RCA, 1x S-Video	5x BCN, 1x RCA, 1x S-Video	5x BCN, 1x RCA, 1x S-Video	5x BCN, 1x RCA, 1x S-Video
	Computer	2x RGB	2x RGB	2x RGB	2x RGB	1x RGB, 1x DVI	1x RGB, 1x DVI	2x RGB, 1x DVI
	Audio	4x mini-jack	4x mini-jack, 2x RCA	2x mini-jack, 4x RCA	3x mini-jack, 2x RCA	1x mini-jack, 6x RCA	1x mini-jack, 6x RCA	3x mini-jack, 6x RCA
	Output	1x RGB 1x mini-jack, 5W mono	1x RGB 1x mini-jack, 5W mono	1x RGB 1x mini-jack, 5W mono	1x RGB 1x mini-jack	1x RGB 1x mini-jack	1x RGB 1x mini-jack	1x RGB 1x mini-jack
Control		RS-232C and USB	RS-232C and USB	RS-232C, USB and Wireless	RS-232C	RS-232C and USB	RS-232C, USB and Wireless	RS-232C and USB
Network Interface		no	yes	yes (PCMCIA LAN card)	yes	yes	yes (PCMCIA LAN card)	yes
Wireless		no	no	yes (802.11b/g)	no	no	yes (802.11b/g)	no
Mouse Emulation	USB	yes	yes	yes	no	yes	yes	yes
PC less presentations		no	no	yes (USB memory or PCMCIA)	no	no	PCMCIA	no
Screen Size		30" to 300"	30" to 300"	30" to 300"	30" to 300"	depends on lens	depends on lens	depends on lens
Accessories Included	Remote Control	yes	yes	yes	yes	yes	yes	yes
	RGB Cable	yes	yes	yes	yes	yes	yes	yes
	USB Cable	yes	yes	yes	no	yes	yes	yes
	Carry Case	no	no	no	no	no	no	no



For further information please contact your local Epson office or visit www.epson-europe.com

Austria 0810/20 01 13 (0,07 €/Min.) Belgium 070/350120 (0,1735 €/Min.) Czech 800 / 142 052 Denmark 44 50 85 85 Finland 0201 552 091
France 0892 899 999 (0,34€/min) Germany 01805/23 41 10 (0,12 €/Min.) ab dem 01.01.07 (0,14 €/Min.) Greece 210-8099499
Hungary 06800 147 83 Italy 02-660321 10 (0,12 €/Min.) Luxembourg 900/43010 (0,24 €/mn.) Middle East +9714 8818934
Netherlands 0900-5050808 (0,05 €/oproep + 0,15 €/Min.) Norway 22 06 42 80 Poland 0-0-800 4911299 (0,16 zł/min.)
Portugal 707 222 111 Russia (095) 777-03-55 Slovakia 0850 111 429 South Africa (+2711) 465-9621 Spain 93 582 15 00
Sweden 0771-400135 (Mobilsamtal - 0,99 kr/min, Lokala samtal - 0,30 kr/min, Utlandssamtal - 0,89 kr/min)
Switzerland 0848 448820 (4-8 cent./mn.) Turkey (0212) 3360303 United Kingdom +44 (0) 1442 261144

EPSON® is a registered trademark of Seiko EPSON® Corporation. All other product names and other company names used herein are for identification purposes only and may be trademarks or registered trademarks of their respective owners. Errors and omissions excepted, all specifications are subject to change without notice.

Entity carrying out management and coordination pursuant to article 2497 bis of Civil Code: Epson Europe BV

EPSON®